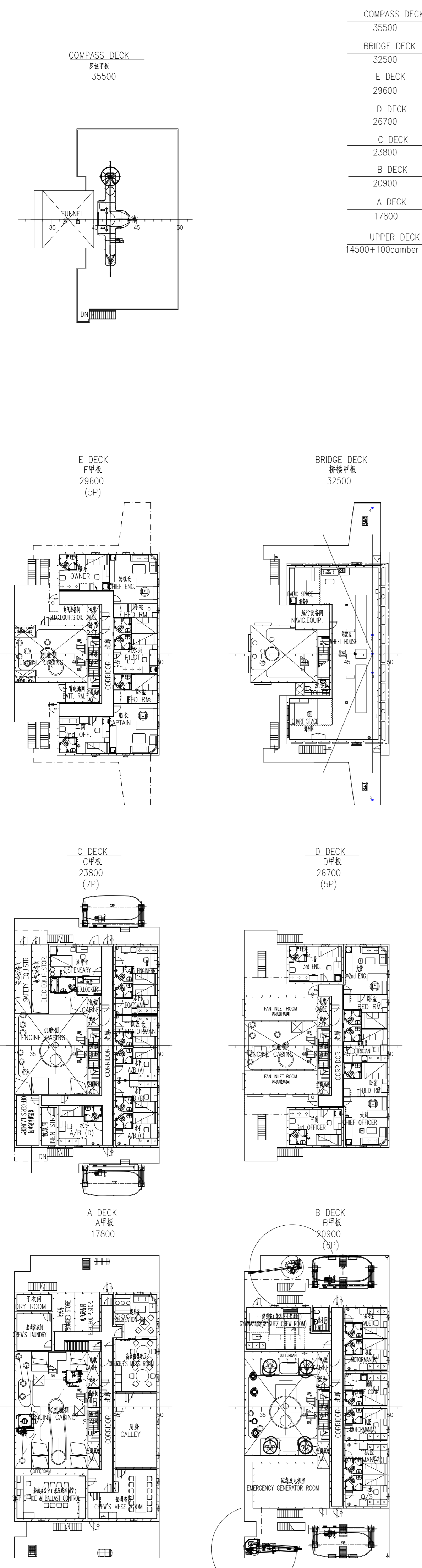
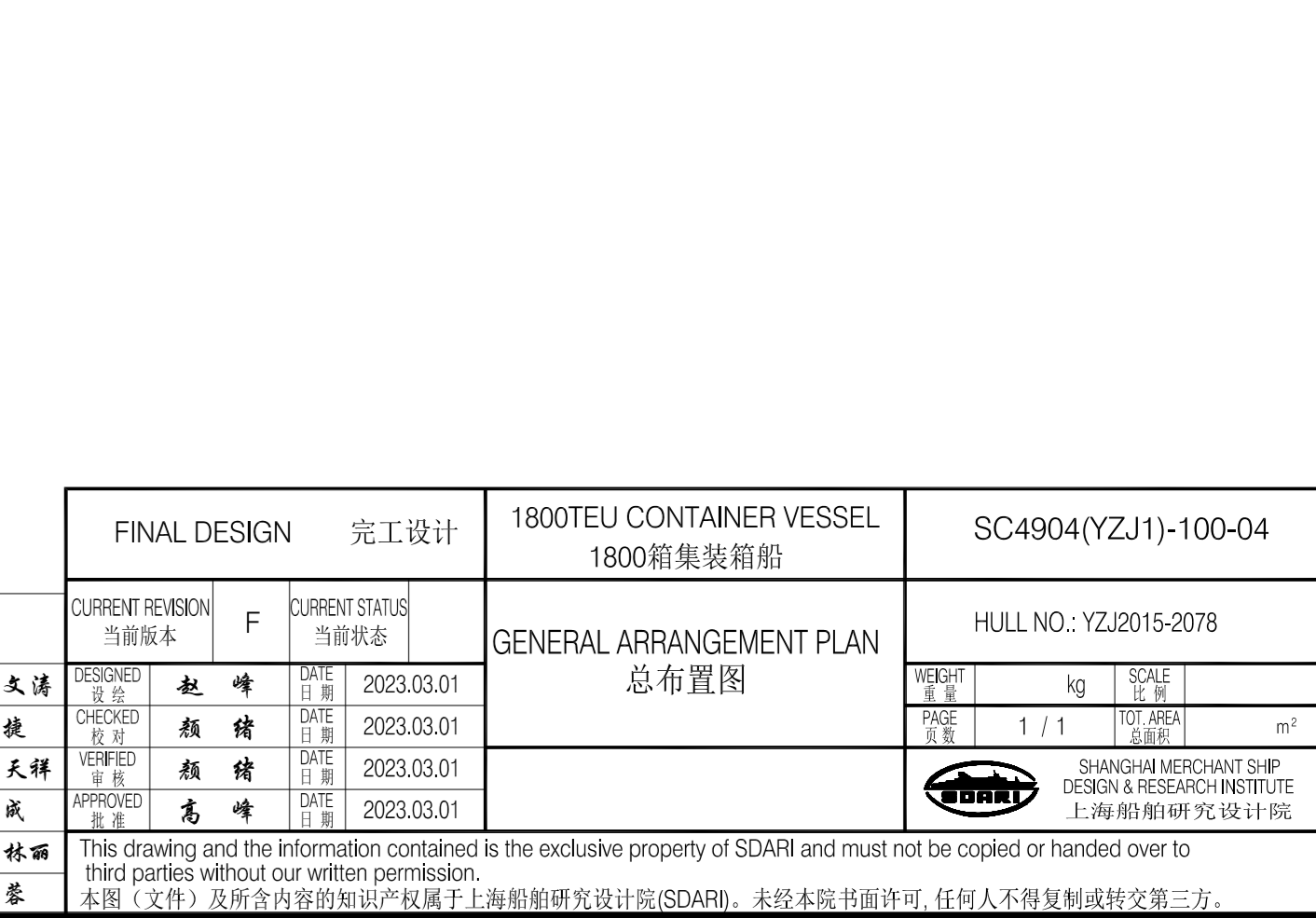
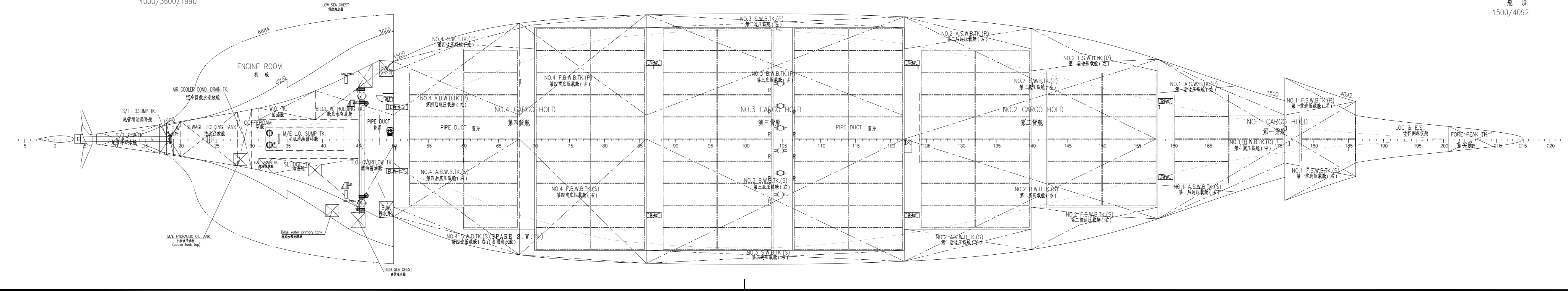
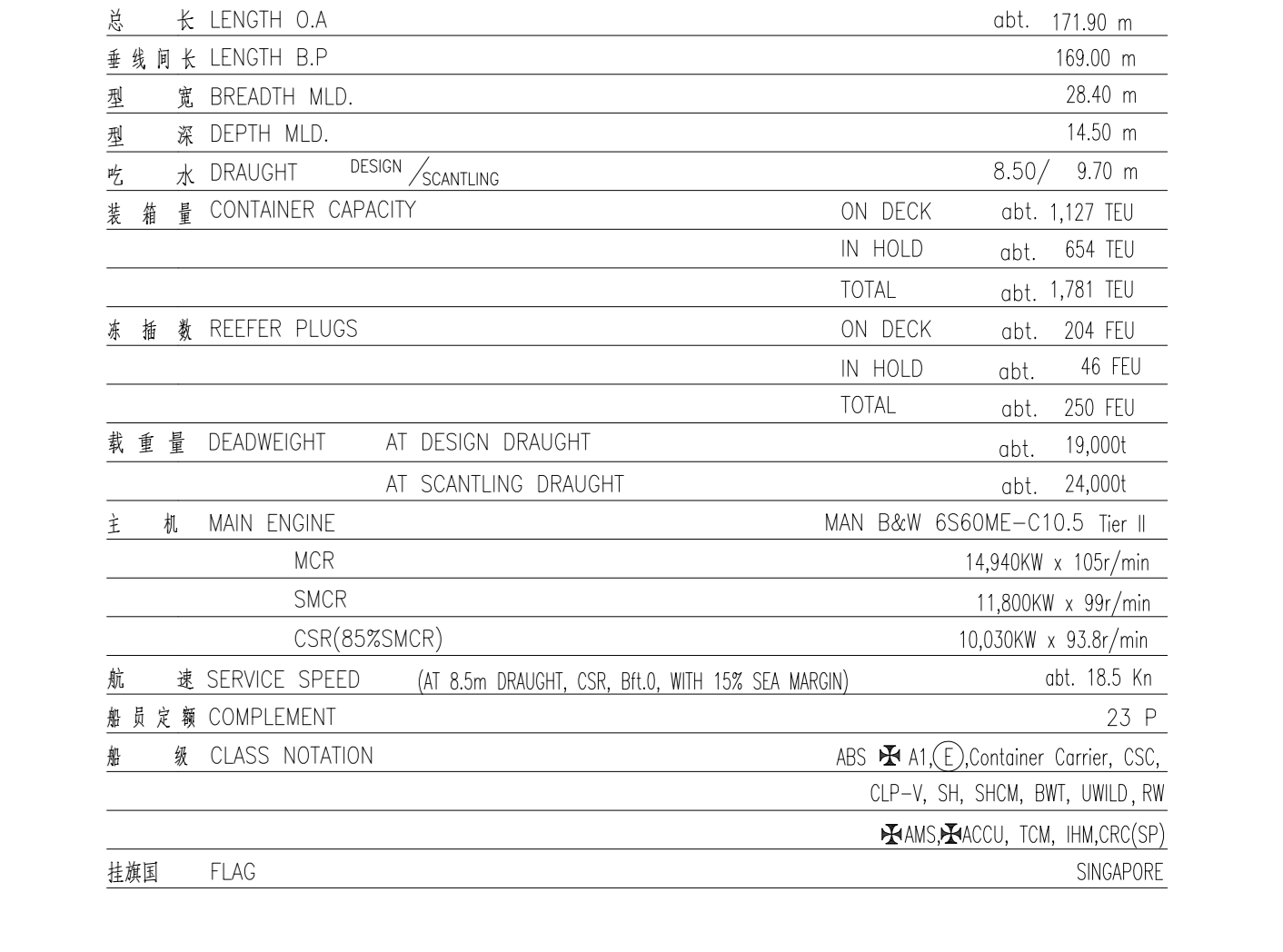
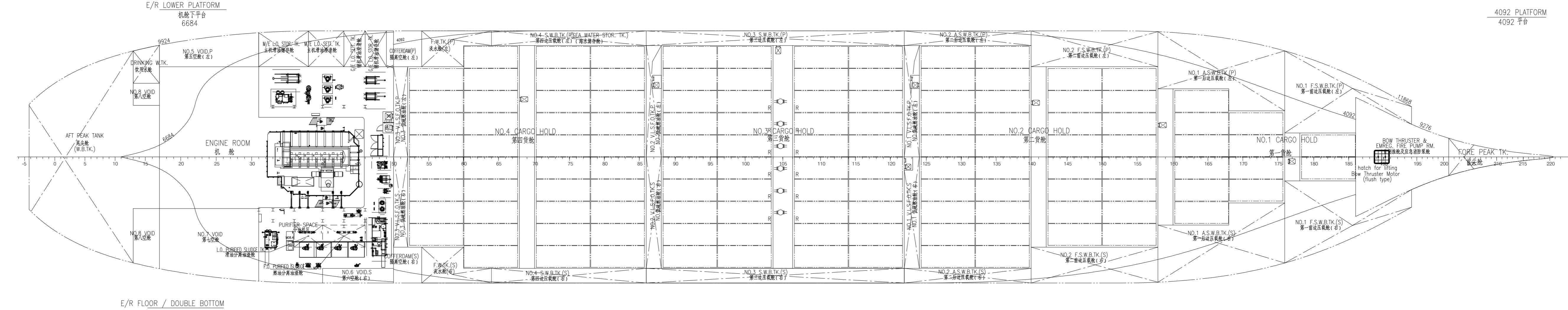
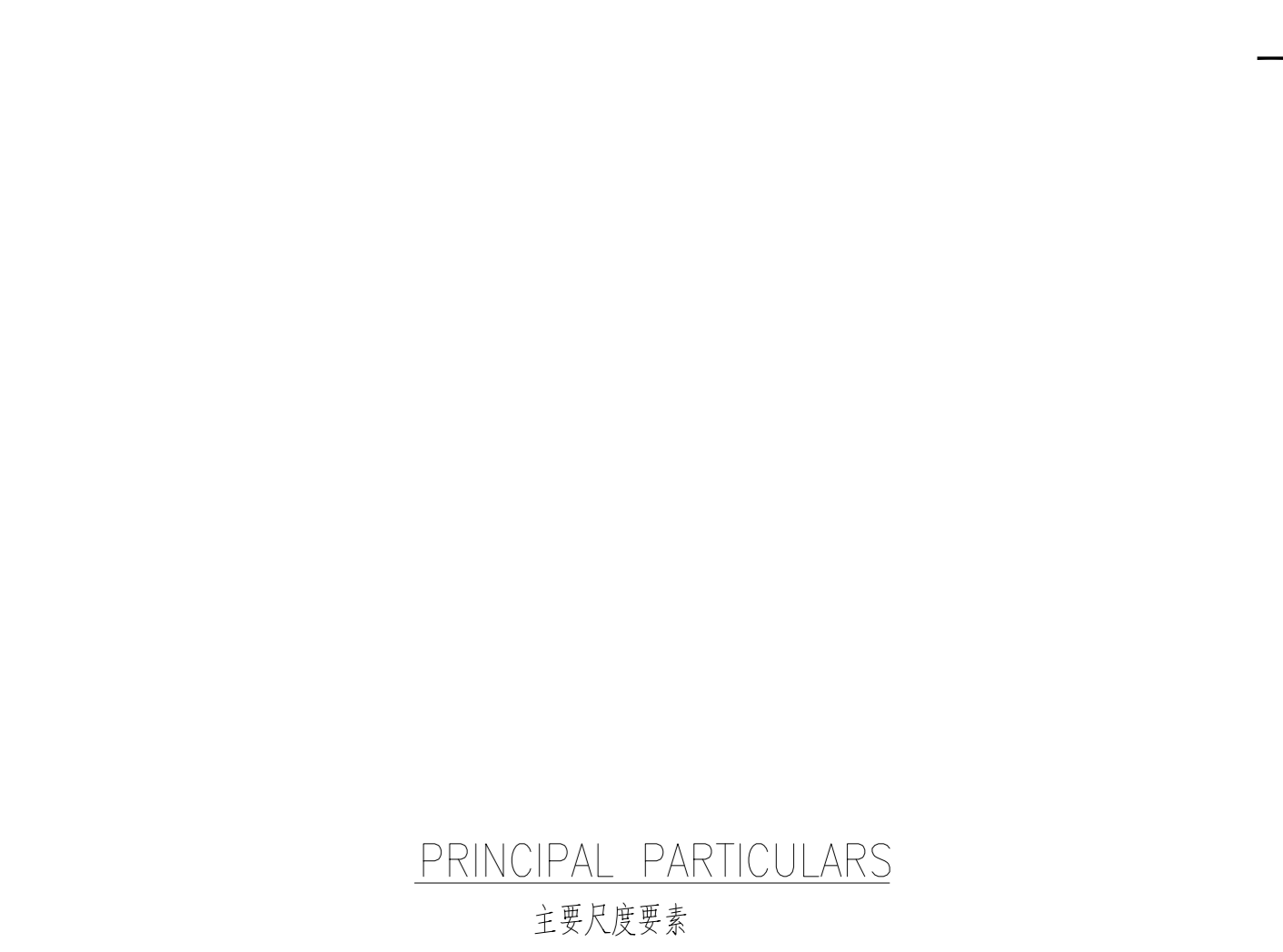
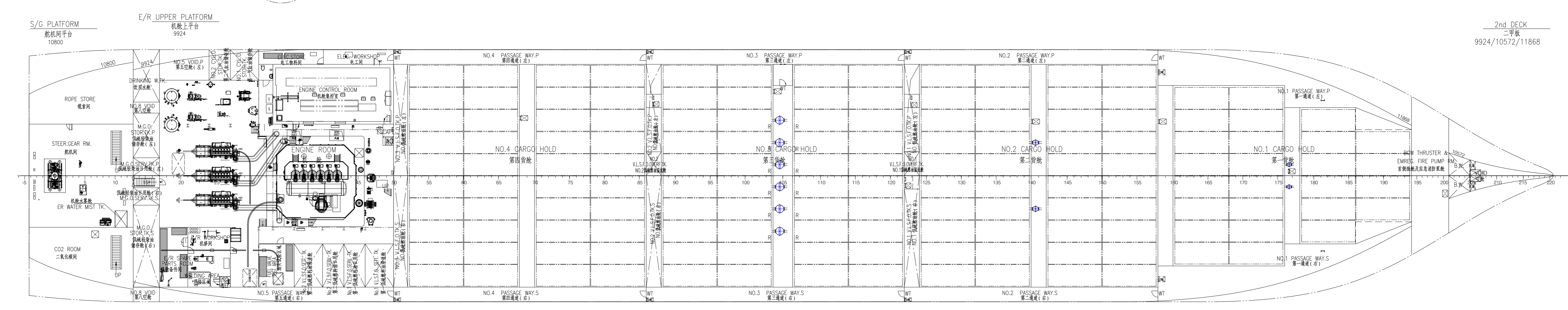
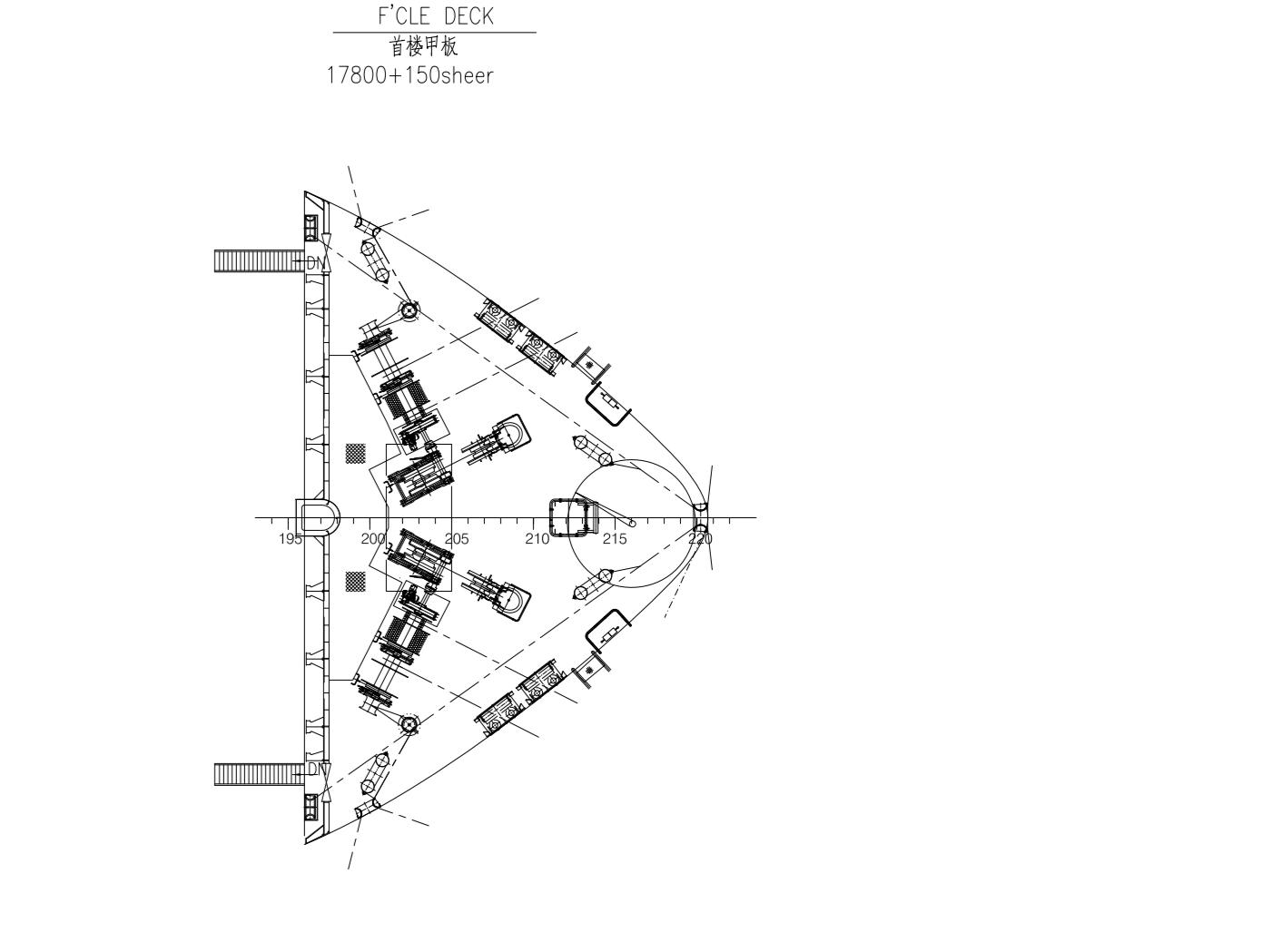
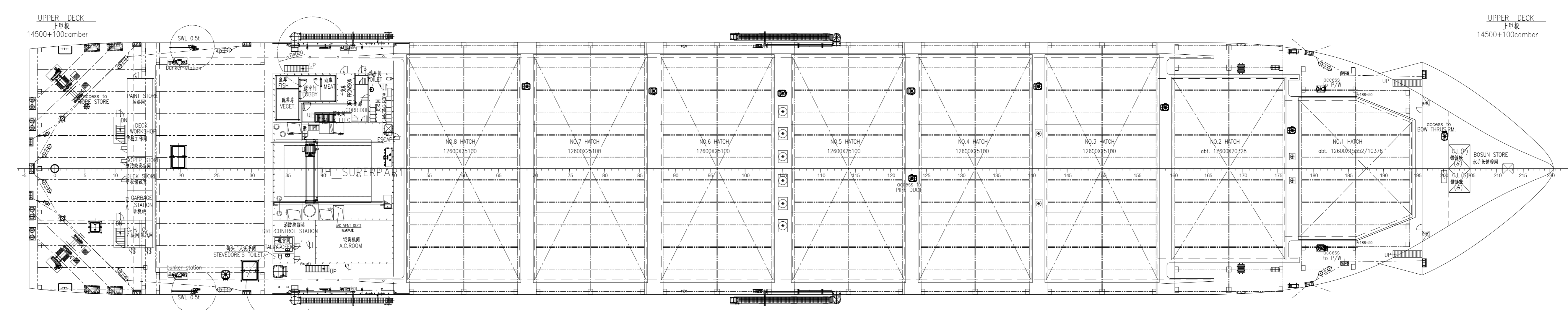
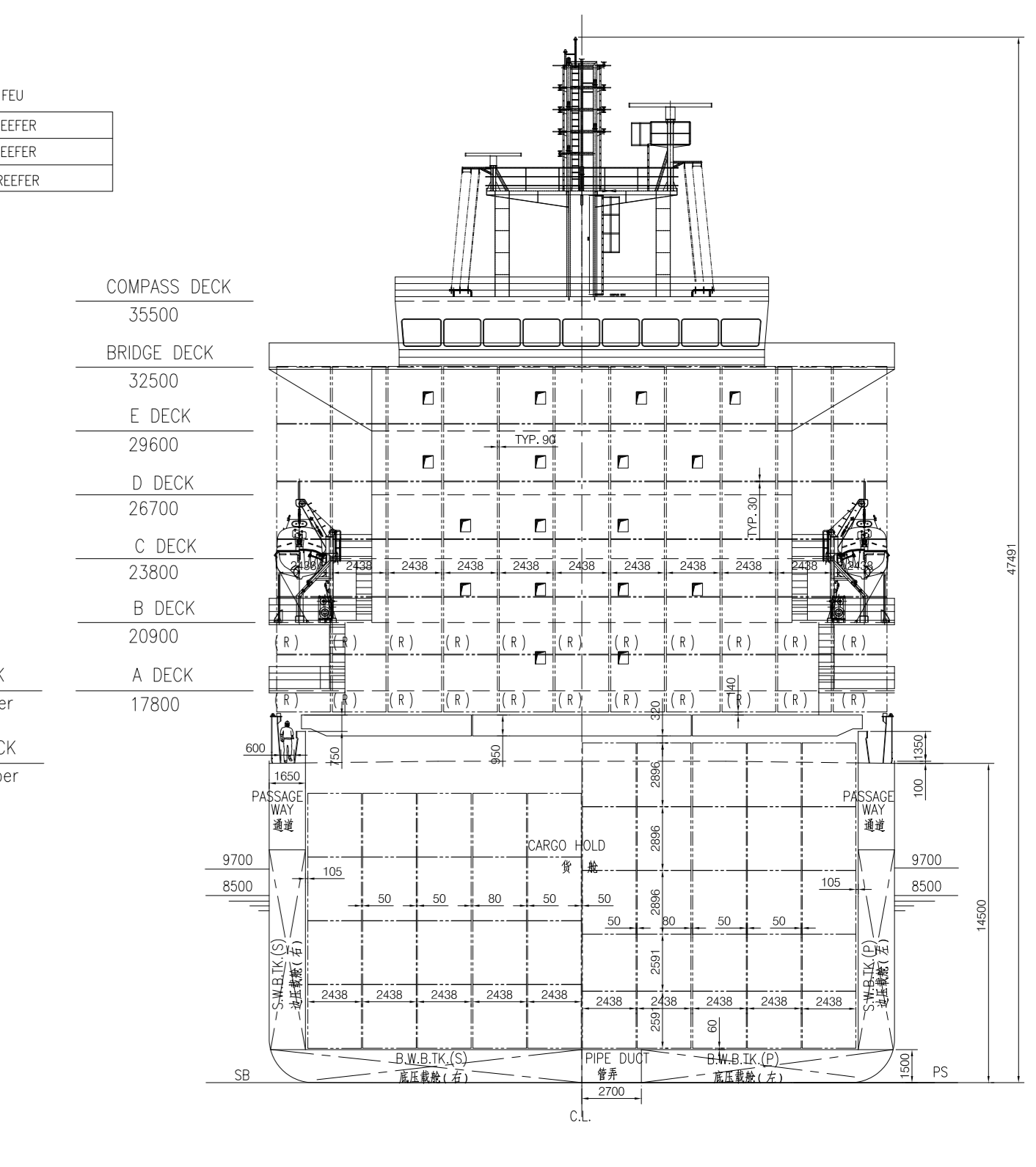
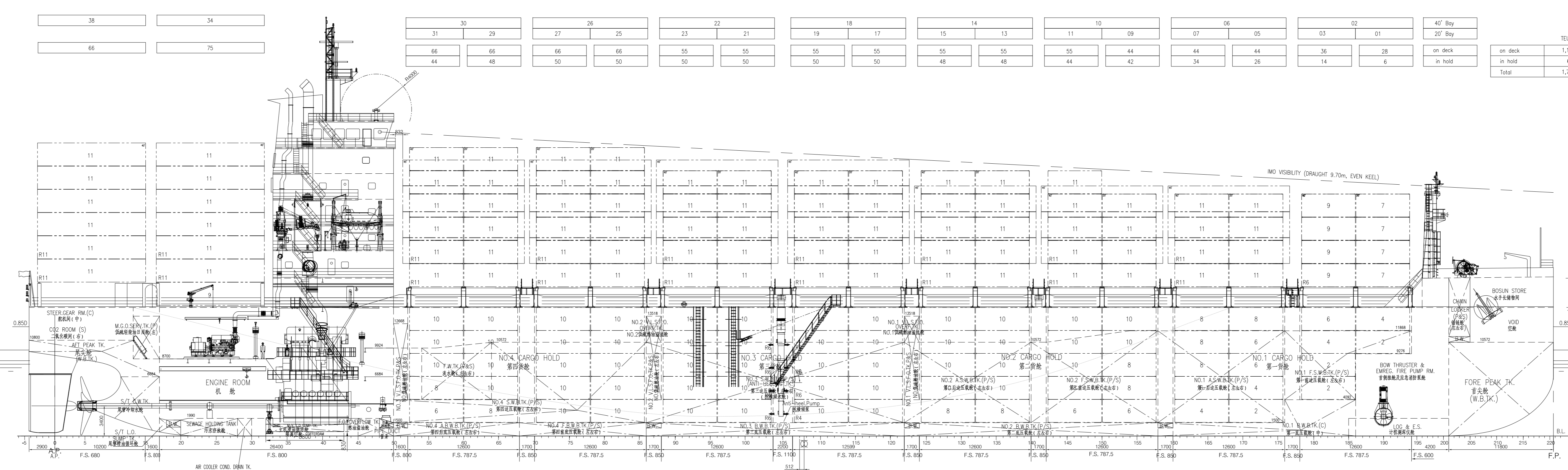


REVISION HISTORY				
REV. 版本号	DESCRIPTION 描述	DATE 日期	CHECKED 校核	DATE 日期
1	FINAL VERSION 最终版本	2023.03.01	##	2023.03.01



PRINCIPAL PARTICULARS
主要尺度要素

总长 LENGTH O.A.	171.90 m
垂线间长 LENGTH B.P.	169.00 m
型宽 BREADTH MLD.	26.40 m
型深 DEPTH MLD.	14.50 m
吃水 DRAUGHT DESIGN/SCANTLING	8.50/ 9.30 m
集装箱容量 CONTAINER CAPACITY	ON DECK obt. 1121 TEU TOTAL obt. 1,781 TEU
集装箱系泊插孔 REEFER PLUGS	ON DECK obt. 204 REEFER IN HOLD obt. 46 REEFER TOTAL obt. 250 REEFER
数量 DEADWEIGHT AT DESIGN DRAUGHT	obt. 19,000
数量 MAIN ENGINE	AT SCANTLING DRAUGHT obt. 24,000
MAN B&W 6550ME-C10.5 Type II	
MCR	14,940kW x 105/rev
SMCR	11,800kW x 99/rev
CSR(SMCMCR)	10,000kW x 93.9/rev
额定航速 SPEED (AT 8.5m DRAUGHT, CSR, B&W, WITH 15% SEA MARGIN)	obt. 18.5 Kn
轴系配置 COMPLEMENT	2.3 P
船级 CLASS NOTATION	ABS A1 Container Carrier, ESC, CLP-4, SA, SHCM, DWT, UMLD, RM
船旗国 FLAG	SINGAPORE

FINAL DESIGN 完工设计		1800TEU CONTAINER VESSEL 1800箱集装箱船		SC4904(YZJ1)-100-04	
会签:	CURRENT DESIGN 当前版本	F	CURRENT STATUS 当前状态	GENERAL ARRANGEMENT PLAN 总布置图	HULL NO.: YZJ2015-2078
结构 曹文强	校核 赵峰	DATE 2023.03.01		比例 1:1	NO SCALE
内装 郑天祥	校核 赵峰	DATE 2023.03.01		比例 1:1	NO SCALE
动力 王磊	校核 赵峰	DATE 2023.03.01			
电气 王磊	校核 赵峰	DATE 2023.03.01			